



The Residences of Laule'a is an exciting new development located within the world-class resort of Mauna Lani on Hawaii's Big Island. This exclusive community consists of just 17 luxury homes, each of which has been carefully designed and positioned to create large private living spaces and unparalleled comfort with amazing ocean, mountain and golf course views.

LAULE'A RESIDENTIAL SITE MAP



- ◆ Makai homes are north-facing, situated closer to the ocean.
- ◆ Mauka homes are east-facing, situated closer to the mountains.

Images are for illustrative purposes only. Final design may vary. All information regarding The Residences of Laule'a (the project) was current at the time of printing but it is subject to change without notice. This includes, but is not limited to, sales prices, unit availability, interior and exterior design, interior and exterior specifications, and landscaping and common elements. Please speak to the project's brokers for the most current information.



# 4-BEDROOM DETACHED

Each detached home is ocean-facing and perched on the edge of the first fairway of the stunning Francis H. I'i Brown South Course. With features that include a detached guest ohana, a private front courtyard, an infinity-edge pool with waterfall spa and an optional outdoor privacy garden and shower, this home will allow you to get lost in your own private oasis.

## DETACHED MAKAI 4-BEDROOM



### Design Specifications

<b>Number of Bedrooms</b>	4 King Bedrooms	<b>Uncovered Lanai<sup>1</sup></b>	852 sq. ft.
<b>Number of Bathrooms</b>	4 Attached, 1 Powder Room	<b>Total Living Space</b>	4,110 sq. ft.
<b>Interior Living Space</b>	2,887 sq. ft.	<b>Garage (not shown)</b>	518 sq. ft.
<b>Covered Lanai</b>	371 sq. ft.	<b>Total Square Footage</b>	4,628 sq. ft.

<sup>1</sup>Uncovered Lanai includes pool deck, front porch, guest ohana lanai, and optional privacy garden.

Images are for illustrative purposes only. Final design may vary.

All information regarding The Residences of Laule'a (the project) was current at the time of printing but it is subject to change without notice. This includes, but is not limited to, sales prices, unit availability, interior and exterior design, interior and exterior specifications, and landscaping and common elements. Please speak to the project's brokers for the most current information.



# 4-BEDROOM ATTACHED

With Makai or Mauka views to choose from, discover comfort and serenity as you enjoy the breathtaking scenery from your lanai or upper balcony. With ocean-facing Makai units, you will experience infinity-edge pools that overlook the first fairway of the stunning Francis H. I'i Brown South Course. The spacious yards of the Mauka units back onto the historic King's Trail.

## ATTACHED MAKAI 4-BEDROOM



### Design Specifications

<b>Number of Bedrooms</b>	4 King Bedrooms
<b>Number of Bathrooms</b>	4 Attached, 1 Powder Room
<b>Interior Living Space</b>	2,770 sq. ft.
<b>Covered Lanai</b>	409 sq. ft.
<b>Uncovered Lanai<sup>1</sup></b>	922 sq. ft.
<b>Total Living Space</b>	4,110 sq. ft.
<b>Garage (not shown)</b>	404 sq. ft.
<b>Total Square Footage</b>	4,628 sq. ft.

<sup>1</sup>Uncovered Lanai includes pool deck, front porch, and upper balcony.

Images are for illustrative purposes only. Final design may vary.

All information regarding The Residences of Laule'a (the project) was current at the time of printing but it is subject to change without notice. This includes, but is not limited to, sales prices, unit availability, interior and exterior design, interior and exterior specifications, and landscaping and common elements. Please speak to the project's brokers for the most current information.



# 3-BEDROOM ATTACHED

Enjoy stunning views of Mauna Kea from your pool or spa in your private backyard. The large, open-concept great room and kitchen flow seamlessly onto the spacious lanai and pool deck. You will have ample room to explore, entertain, and make memories. These homes also feature ocean-facing balconies on the upper level.

## ATTACHED MAUKA 3-BEDROOM



### Design Specifications

<b>Number of Bedrooms</b>	3 King Bedrooms
<b>Number of Bathrooms</b>	3 Attached
<b>Interior Living Space</b>	2,195 sq. ft.
<b>Covered Lanai</b>	430 sq. ft.
<b>Uncovered Lanai<sup>1</sup></b>	553 sq. ft.
<b>Total Living Space</b>	3,178 sq. ft.
<b>Garage (not shown)</b>	396 sq. ft.
<b>Total Square Footage<sup>2</sup></b>	3,574 sq. ft.

<sup>1</sup>Uncovered Lanai includes pool deck, front porch, and upper balcony.

<sup>2</sup>Measurements are for outer units only. Middle-unit interior living space is 2,095 sq. ft and total living space is 3,290 sq. ft.

Images are for illustrative purposes only. Final design may vary.

All information regarding The Residences of Laule'a (the project) was current at the time of printing but it is subject to change without notice. This includes, but is not limited to, sales prices, unit availability, interior and exterior design, interior and exterior specifications, and landscaping and common elements. Please speak to the project's brokers for the most current information.





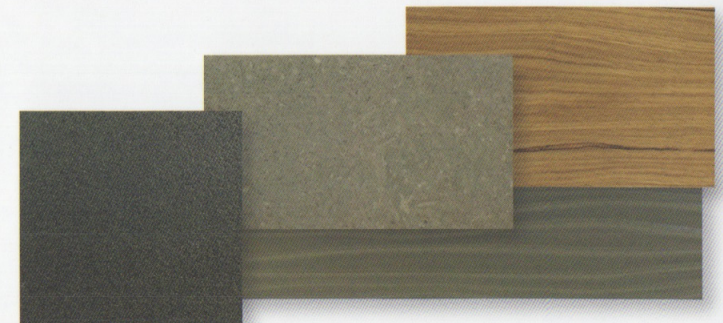


**High-end contemporary designs** mingle with traditional Hawaiian culture in the exquisitely crafted interior of each Laule'a home. Working in conjunction with Philpotts Interiors, a leading Hawaiian design firm, we have created two unique design packages to choose from: Transitional Hawaiian and Modern Island.

**TRANSITIONAL HAWAIIAN DESIGN** unites traditional Hawaiian materials with contemporary designs, creating a home that is current while still maintaining a strong sense of place. This flexible design can be furnished to make it more traditional or more contemporary, allowing your sense of style to shine through.



**MODERN ISLAND DESIGN** combines current designs, color palettes, and unique materials to create a more contemporary take on classic island themes. The result is a clean, modern home that still provides a warm and authentic island experience.



Renderings are for illustrative purposes only. Final design may vary. All information regarding The Residences of Laule'a (the project) was current at the time of printing but it is subject to change without notice. This includes, but is not limited to, sales prices, unit availability, interior and exterior design, interior and exterior specifications, and landscaping and common elements. Please speak to the project's brokers for the most current information.



The highest quality materials and appliances have been selected to ensure exceptional beauty, comfort, reliability, and efficiency. To complement these standard features, owners can also choose from a host of options, allowing them to customize interior design and amenities to their personal tastes.<sup>1</sup>

## SUBZERO

Sub-Zero has long offered innovative and aesthetically appealing solutions to meet any home refrigeration need. The company has earned its position as an industry leader, creating stylish, functional, and environmentally friendly units. A Sub-Zero refrigerator, wine cooler, and ice maker are standard in each Laule'a home.



## WOLF

As part of Sub-Zero, the Wolf line has been adapted for the serious in-home cook. With superior performance and leading-edge design, Wolf instruments fuel a passion for cooking. Each oven, range, microwave, and barbecue will add beauty and high performance to your Hawaiian cooking experience.



## WOOD CEILING *(Optional)*

Vaulted ceilings covered with woven grasses or bamboo, and trimmed with wood, are a signature of Hawaiian design. With multiple options, from a traditional woven-grass mat to a more contemporary tongue-and-groove cedar plank, you can select a ceiling to suit your style.



## Standard Features

- ◆ Stone flooring and hardwood throughout
- ◆ Custom cabinetry with stone countertops
- ◆ Wolf oven and gas cooktop
- ◆ Sub-Zero refrigerator
- ◆ Sub-Zero under-counter wine cooler
- ◆ Dedicated bar with sink and Sub-Zero ice maker
- ◆ Plumbing fixtures by Hansgrohe
- ◆ Toto water closet
- ◆ Energy-saving “smart” thermostats
- ◆ Lock-off owner’s closets and storage areas
- ◆ Wired for sound

## Optional Features<sup>1</sup>

- ◆ Custom wood and grass ceiling finishes
- ◆ Custom AV system
- ◆ Power blinds
- ◆ Custom paint colors
- ◆ Custom lighting fixtures
- ◆ Enhanced custom closets
- ◆ Built-in Miele espresso maker

<sup>1</sup>Options for customization may vary and are subject to timing of purchase. Please speak to the project’s brokers for additional information.

Images are for illustrative purposes only. Final design may vary.

All information regarding The Residences of Laule'a (the project) was current at the time of printing but it is subject to change without notice. This includes, but is not limited to, sales prices, unit availability, interior and exterior design, interior and exterior specifications, and landscaping and common elements. Please speak to the project’s brokers for the most current information.



Striking outdoor spaces blend effortlessly with the interior, creating a single, seamless living space. Private yards encourage you to spend your time outside, enjoying the beautiful Hawaiian scenery. Each yard is fully developed with lush landscaping, a private pool and spa, a barbecue, and generous covered space on the lanai.



ATTACHED MAKAI 4-BEDROOM

### Standard Features

- ◆ Fully landscaped yards that provide private living spaces
- ◆ Private pool and spa
- ◆ Infinity-edge ocean-view pools for all Makai units
- ◆ Travertine or limestone lanais and pool decks
- ◆ Built-in barbecue area supplied by central gas
- ◆ Black lava stone retaining walls
- ◆ Wired for outdoor sound and television
- ◆ Landscape lighting
- ◆ Tiki torches

### Optional Features<sup>1</sup>

- ◆ Photovoltaic solar power system
- ◆ Outdoor shower and privacy garden (detached units)
- ◆ Outdoor shower on the upper balcony (4-bedroom attached units)
- ◆ Enhanced barbecue/outdoor kitchen
- ◆ Expanded pool deck
- ◆ Solar pool heating

<sup>1</sup>Options for customization may vary and are subject to timing of purchase. Please speak to the project's brokers for additional information.

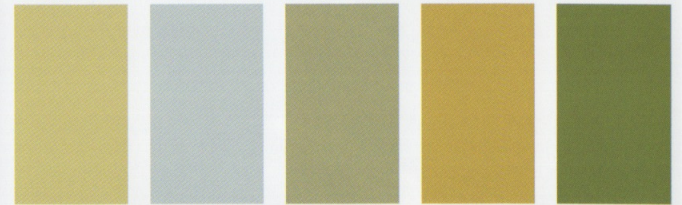
Renderings are for illustrative purposes only. Final design may vary. Some optional features are shown.

All information regarding The Residences of Laule'a (the project) was current at the time of printing but it is subject to change without notice. This includes, but is not limited to, sales prices, unit availability, interior and exterior design, interior and exterior specifications, and landscaping and common elements. Please speak to the project's brokers for the most current information.



Furnish your home effortlessly with Luxus Living. Express your individual style as you choose from one of three comprehensive furniture packages that will be available in various color palettes. Each piece will be individually selected to complement the Transitional or Modern design concept that you have selected for your new home. You will also have the opportunity to order a complete housewares package, allowing you to enjoy living in your new home from the very first moment you arrive.

LUXUS  
— LIVING —



TRANSITIONAL HAWAIIAN  
Furnishings that blend the traditional Hawaiian with the contemporary resulting in a timeless design that is a comfortable classic.

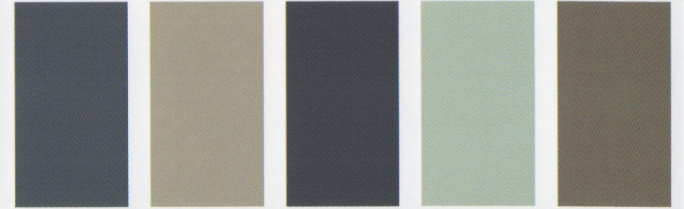
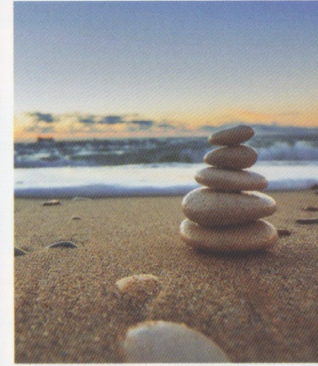
Images are for illustrative purposes only. Final design may vary. All information regarding The Residences of Laule'a (the project) was current at the time of printing but it is subject to change without notice. This includes, but is not limited to, sales prices, unit availability, interior and exterior design, interior and exterior specifications, and landscaping and common elements. Please speak to the project's brokers for the most current information.





Furnish your home effortlessly with Luxus Living. Express your individual style as you choose from one of three comprehensive furniture packages that will be available in various color palettes. Each piece will be individually selected to complement the Transitional or Modern design concept that you have selected for your new home. You will also have the opportunity to order a complete housewares package, allowing you to enjoy living in your new home from the very first moment you arrive.

LUXUS  
— LIVING —



MODERN ISLAND  
Design that reflects structural simplicity and clean architectural lines using materials that retain an island feel.

Images are for illustrative purposes only. Final design may vary. All information regarding The Residences of Laule'a (the project) was current at the time of printing but it is subject to change without notice. This includes, but is not limited to, sales prices, unit availability, interior and exterior design, interior and exterior specifications, and landscaping and common elements. Please speak to the project's brokers for the most current information.



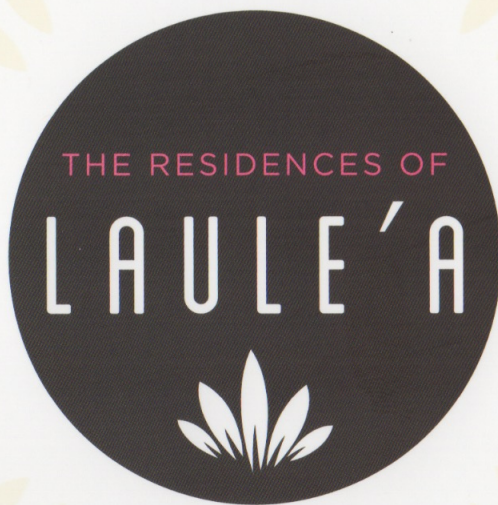
# MAUNA LANI RESORT AMENITIES

Enjoy Mauna Lani, a five-star resort with its own private beach club. Other amenities include the private Mauna Lani Sports & Fitness Centre, featuring tennis courts, a gym and fitness classes, and the Mauna Lani Spa. You will also have access to two 18-hole championship golf courses and The Shops at Mauna Lani which offers great shopping and both casual and fine dining.



Images are for illustrative purposes only. Image is for illustrative purposes only and may not be to scale. All information regarding The Residences of Laule'a (the project) was current at the time of printing but it is subject to change without notice. This includes, but is not limited to, sales prices, unit availability, interior and exterior design, interior and exterior specifications, and landscaping and common elements. Please speak to the project's brokers for the most current information.





Rick Oliver (RB 18823)  
Clark Realty Corporation  
808-960-7330  
68-1400 Mauna Lani Dr #310  
Kohala Coast, HI 96743