

VILLAGES AT MAUNA LANI #409 - KAMUELA, HI



14 Photos Available

\$1,750,000

MLS: [292125](#) | Condo | **3 Bed, 3.01 Bath** | 2,643 Sq Ft | [3-6-8-22-4-1](#) | Fee Simple

This Kahili Plan Home is located within Phase 1 of The Villages at Mauna Lani and overlooks the 13th green of the Mauna Lani North Course. Infrequently used second home is not in a vacation rental program and shows great pride of ownership. Exquisitely furnished and ... [more](#)
Active

VILLAGES AT MAUNA LANI #427 - KAMUELA, HI



25 Photos Available

\$1,850,000

MLS: [293885](#) | Condo | **3 Bed, 3.01 Bath** | 2,558 Sq Ft | [3-6-8-22-4-20](#) | Fee Simple

Perched above the Mauna Lani North course, Villages 427 offers the privacy and serenity of a detached single family home with the convenience of a condominium. This very successful vacation rental has been immaculately maintained. Maryl built, the home features a che... [more](#)
Active

VILLAGES AT MAUNA LANI #317 - KAMUELA, HI



25 Photos Available

\$1,200,000

MLS: [603183](#) | Condo | **3 Bed, 3.01 Bath** | 2,752 Sq Ft | [3-6-8-22-4-23](#) | Fee Simple

Looking for quality construction by a custom builder in a serene exclusive location? Look no further. The Villages at Mauna Lani 317 has it all. #317 has never been rented and it shows. It is located in one of the quietest locations that exist in the Mauna Lani R... [more](#)
Active

VILLAGES AT MAUNA LANI #319 - KAMUELA, HI



15 Photos Available

\$1,050,000

MLS: [290550](#) | Condo | **3 Bed, 3.01 Bath** | 2,752 Sq Ft | [3-6-8-22-4-24](#) | Fee Simple

REDUCED \$200,000. Villages 319, a Maile townhome, of quality Maryl construction with mahogany doors and trim, wood ceiling in great room, built-in desk in first level entry, cherry cabinets, granite counters, top appliances, custom furnishings and spaciousness in ev... [more](#)
Active

VILLAGES AT MAUNA LANI #431 - KAMUELA, HI



23 Photos Available

\$1,895,000

MLS: [293550](#) | Condo | **3 Bed, 3.01 Bath** | 2,558 Sq Ft | [3-6-8-22-4-32](#) | Fee Simple

GOLF COURSE FRONT. Incredibly priced, Alii home plan in the Village with pool and rare solar system installed. This unit is detached like a single family home for the utmost in privacy. Many recent furnishing upgrades- complete inventory upon request. Quality M... [more](#)
Active

VILLAGES AT MAUNA LANI #320 - KAMUELA, HI



20 Photos Available

\$979,900

MLS: [605200](#) | Condo | **3 Bed, 3.01 Bath** | 2,174 Sq Ft | [3-6-8-22-4-45](#) | Fee Simple

Located in Villages at Mauna Lani-this popular Lehua Plan is equipped with a 39 panel Solar System. Unit 320 has one of the best locations in The Villages- which includes a large grassed common area off of the great room and rear BBQ lanai and located at the end of ... [more](#)
Active

VILLAGES AT MAUNA LANI #109 - KAMUELA, HI



25 Photos Available

\$1,275,000

MLS: [601732](#) | Condo | **3 Bed, 3.01 Bath** | 2,643 Sq Ft | [3-6-8-22-4-57](#) | Fee Simple

Remarks: Villages 109- Kahili- Single family, stand alone residence, one level with no stairs. 3 bedroom 3.5 bath plus office, quality Maryl construction with many upgrades including vaulted wood ceilings, water softener, central vacuum, Fisher and Paykel, Sub Zer... [more](#)
Active

68-1025 KANIKU DR #205 - KAMUELA, HI



25 Photos Available

\$915,000

MLS: [299630](#) | Condo | **3 Bed, 3.01 Bath** | 2,174 Sq Ft | [3-6-8-22-4-61](#) | Fee Simple

Villages 205 is the popular Lehua model, freshly painted, fully furnished, 3 bedroom 3.5 bath townhouse, with a large lanai opening onto spacious lawn area, upper master bedroom with private lanai and a peek of the ocean, guest bedroom suite with Mauna Kea views, 2 ... [more](#)
Active

VILLAGES AT MAUNA LANI #726 - KAMUELA, HI



25 Photos Available

\$2,150,000

MLS: [295662](#) | Residential | **3 Bed, 3.01 Bath** | 2,643 Sq Ft | 1.00 ac | [3-6-8-22-4-65](#) | Fee Simple

Villages 726 in world-class Mauna Lani Resort: Single level exquisitely furnished home with private pool and back yard. Bask in one of the best positioned-secluded locations with unobstructed golf course and horizon views overlooking Mauna Lani North Course. Exquisit... [more](#)
Active

VILLAGES AT MAUNA LANI #720 - KAMUELA, HI



25 Photos Available

\$1,699,000

MLS: [297679](#) | Condo | **3 Bed, 3.01 Bath** | 2,558 Sq Ft | [3-6-8-22-4-68](#) | Fee Simple

A huge price reduction!!! The Villages 720 is a detached single-story 3 bedroom 3.5 bath home with a pool and spa on the golf course. It is located in one of the most sought-after locations within the community and enjoys a wide and open view of Mauna Lani North's 4... [more](#)
Active

VILLAGES AT MAUNA LANI #213 - KAMUELA, HI



24 Photos Available

\$975,000

MLS: [601074](#) | Condo | **3 Bed, 3.01 Bath** | 2,174 Sq Ft | [3-6-8-22-4-70](#) | Fee Simple

The Villages 213 is currently used as a second home and includes a large solar system that provides excellent savings on electric bills. This Lehua model townhome features three en-suite bedrooms with one bedroom downstairs and two upstairs. It has an open floor pl... [more](#)
Active

VILLAGES AT MAUNA LANI #708 - KAMUELA, HI



25 Photos Available

\$1,150,000

MLS: [604974](#) | Condo | **3 Bed, 3.01 Bath** | 2,752 Sq Ft | [3-6-8-22-4-82](#) | Fee Simple

Villages at Mauna Lani- largest Maile Floorplan with owned 30-panel Photo-voltaic System. Private Cul-de-sac location overlooking the 4th Fairway. Ocean Views of Maui from the Highest Point in the project. Lanai with Wet Bar provides Inside/Outside Dining options an... [more](#)
Active

VILLAGES AT MAUNA LANI #614 - KAMUELA, HI



17 Photos Available

\$1,247,000

MLS: [607101](#) | Condo | **3 Bed, 3.01 Bath** | 2,752 Sq Ft | [3-6-8-22-4-87](#) | Fee Simple

Exceptional Maile floor-plan is a turn-key fully furnished townhome. 3 large bedroom suites with walk in closets and private baths, powder room and spacious 2 car garage with storage. Quality Maryl construction features solid mahogany doors and trim, cherry cabinet... [more](#)
Active

VILLAGES AT MAUNA LANI #603 - KAMUELA, HI



25 Photos Available

\$959,000

MLS: [608484](#) | Condo | **3 Bed, 3.01 Bath** | 2,174 Sq Ft | [3-6-8-22-4-100](#) | Fee Simple

Enjoy the perfect Resort Hawaii lifestyle year around! Privileges including "Owners Private Beach CLUB Access". Very unusual and incredible, large, private, rear yard, plenty of space between you and your neighbors. Expansive Park like setting off your lanai. Extreme... [more](#)
Active

68-1025 KANIKU DR #620 - KAMUELA, HI



25 Photos Available

\$1,190,000

MLS: [299162](#) | Condo | **3 Bed, 3.01 Bath** | 2,752 Sq Ft | [3-6-8-22-4-116](#) | Fee Simple

Mauna Lani Villages Unit 620 is designer furnished and a beautiful home or rental. Popular Maile model. Don't miss touring this property! If you can't see it in person - take a look at the 3D tour here..... <http://premium3dtours.com/MLS299162> Never rented by present... [more](#)
Active

VILLAGES AT MAUNA LANI #634 - KAMUELA, HI



23 Photos Available

\$1,385,000

MLS: [605177](#) | Condo | **3 Bed, 3.01 Bath** | 2,752 Sq Ft | [3-6-8-22-4-121](#) | Fee Simple

Villages 634 has wonderful sunset, ocean, Maui, Mauna Kea and Kohala views. Built in late 2005, this extremely private unit has some of the best views in the Villages. Fully furnished with beautiful Koa pieces and some art included. Immaculate condition as never ren... [more](#)
Active

VILLAGES AT MAUNA LANI #642 - KAMUELA, HI



18 Photos Available

\$1,350,000

MLS: [276728](#) | Condo | **3 Bed, 3.01 Bath** | 2,752 Sq Ft | [3-6-8-22-4-125](#) | Fee Simple

Maile #642 has arguably the best ocean and sunset views at the Villages. Recently painted and reduced in price. Located at the end of a cul de sac, 642 is extremely private. Offered furnished, with wood ceiling treatments, slate floors, granite counters, cherry cabi... [more](#)
Active

FAIRWAYS AT MAUNA LANI #805 - KAMUELA, HI



25 Photos Available

\$775,000

MLS: [296145](#) | Condo | **3 Bed, 2.01 Bath** | 1,933 Sq Ft | [3-6-8-22-5-47](#) | Fee Simple

This three bedroom Fairway's Condo offers a great location within the community, sitting back from the fairway of the France l'i Brown Championship North Course and within a short walk to the amenities at the Fairways- pool, Jacuzzi and work out room. Well maintained... [more](#)
Active

FAIRWAYS AT MAUNA LANI #902 - KAMUELA, HI



25 Photos Available

\$799,000

MLS: [603178](#) | Condo | **3 Bed, 2.01 Bath** | 1,933 Sq Ft | [3-6-8-22-5-50](#) | Fee Simple

This 3 bedroom, 2.5 bathroom unit enjoys the very best location in the Fairways at Mauna Lani. Building 9 is situated closest to the ocean, steps from the pool, with beautiful Kohala mountain and golf course views. As you enter, the soaring ceilings inside give thi... [more](#)
Active

FAIRWAYS AT MAUNA LANI #1103 - KAMUELA, HI



21 Photos Available

\$649,000

MLS: [297168](#) | Condo | **2 Bed, 2.01 Bath** | 1,646 Sq Ft | [3-6-8-22-5-63](#) | Fee Simple

Great price reduction! Fairways 1103 is a town home, located in one of the most private locations in the community, overlooking Mauna Lani North's 12th tee and fairway. It features two bedrooms with an ensuite bathroom, a powder room, a lanai with gas grill, granite... [more](#)
Active

FAIRWAYS AT MAUNA LANI #1201 - KAMUELA, HI



25 Photos Available

\$599,000

MLS: [601918](#) | Condo | **2 Bed, 2.00 Bath** | 1,289 Sq Ft | [3-6-8-22-5-67](#) | Fee Simple

Fairways at Mauna Lani #1201 is a successful vacation rental with outstanding rental history. Seller's 2015-16 avg. gross rental income is \$66,750 and has 98 positive reviews on VRBO with many repeat renters. Located on a quiet cul de sac in the only building at th... [more](#)
Active

FAIRWAYS AT MAUNA LANI #1503 - KAMUELA, HI



25 Photos Available

\$676,000

MLS: [600701](#) | Condo | **2 Bed, 2.01 Bath** | 1,646 Sq Ft | [3-6-8-22-5-87](#) | Fee Simple

This luxury residence is located directly in-between two world-class resorts: the Mauna Lani and the Fairmont Orchid. Each of these resorts is perched on one of the most beautiful beaches in the world: with white sand, clear blue waters, and the best weather Mother N... [more](#)
Active

FAIRWAYS AT MAUNA LANI #1506 - KAMUELA, HI



22 Photos Available

\$557,000

MLS: [607092](#) | Condo | **2 Bed, 2.00 Bath** | 1,289 Sq Ft | [3-6-8-22-5-90](#) | Fee Simple

Great two-story end unit at Mauna Lani Resort. Come and enjoy luxury resort living at The Fairways. This two-story villa has over 1,600 sq. ft. of living area with garden views through out. Features include, granite counter tops in the kitchen, stainless steel applia... [more](#)
Active

FAIRWAYS AT MAUNA LANI #1606 - KAMUELA, HI



20 Photos Available

\$555,000

MLS: [604777](#) | Condo | **2 Bed, 2.00 Bath** | 1,289 Sq Ft | [3-6-8-22-5-96](#) | Fee Simple

Well appointed, completely furnished 2 Bedroom 2 Bathroom condo at Fairways at Mauna Lani. Lower level flooring has a rich deep wood tone. This home has two full bathrooms and two generous bedrooms. The Fairways at Mauna Lani is a low density development where the ... [more](#)
Active

FAIRWAYS AT MAUNA LANI #2106 - KAMUELA, HI



24 Photos Available

\$599,000

MLS: [601917](#) | Condo | **2 Bed, 2.00 Bath** | 1,289 Sq Ft | [3-6-8-22-5-126](#) | Fee Simple

Fairways at Mauna Lani #2106 is a highly successful income producing vacation rental. Seller's 2016 gross rental income is \$68,105 with many repeat renters. Located just close enough to the pool to enjoy the views and open space, but far enough away to not hear no... [more](#)
Active

MAUNA LANI TERRACE #D101 - KAMUELA, HI



25 Photos Available

\$1,225,000

MLS: [607740](#) | Condo | **2 Bed, 2.01 Bath** | 1,407 Sq Ft | [3-6-8-22-6-23](#) | Fee Simple

A king size bed in master bedroom directly facing the ocean; the lanais feet away from the natural ponds overlook the sea. Walk to the beach. 2 bedroom condo was originally remodeled and has granite countertops, tile floors and bathrooms were redone. Fully furnished. [more](#)
Active

MAUNA LANI TERRACE #F201 - KAMUELA, HI



15 Photos Available

\$1,695,000

MLS: [602849](#) | Condo | **2 Bed, 2.01 Bath** | 1,481 Sq Ft | [3-6-8-22-6-40](#) | Fee Simple

Mauna Lani Terrace F 201 is a fantastic ocean view two bedroom fully furnished villa that has been completely renovated with rich Koa cabinets, granite counters, floor to ceiling mahogany shutters in every room and many custom features. The northerly orientation prov... [more](#)
Active

MAUNA LANI TERRACE #L301 - KAMUELA, HI



24 Photos Available

\$1,425,000

MLS: [604436](#) | Condo | **2 Bed, 2.01 Bath** | 1,453 Sq Ft | [3-6-8-22-6-79](#) | Fee Simple

Nestled in the heart of the Mauna Lani Resort, overlooking the protected ancient fish ponds of the Kalahuipuaa, is the Mauna Lani Terrace. The first residential community developed at Mauna Lani on the best site within the resort. This third floor spacious unit has ... [more](#)
Active

KULALANI AT MAUNA LANI #102 - KAMUELA, HI



14 Photos Available

\$873,000

MLS: [289222](#) | Condo | **3 Bed, 2.01 Bath** | 2,022 Sq Ft | [3-6-8-22-7-2](#) | Fee Simple

Kulalani at Mauna Lani Developers Sales Office Unit #102. This award winning home features 2,022 sq feet of fabulous open yet private luxury living. The moment you enter the beautiful foyer and experience the sweeping spiral staircase you know you are someplace spec... [more](#)
Active

KULALANI AT MAUNA LANI #104 - KAMUELA, HI



15 Photos Available

\$748,000

MLS: [289216](#) | Condo | **2 Bed, 2.01 Bath** | 1,868 Sq Ft | [3-6-8-22-7-4](#) | Fee Simple

Kulalani at Mauna Lani #104 Developers Fully Furnished Model Home with Immediate Occupancy. Much sought after 4-plex building with 2 car garage and plenty of privacy. With over 1800 square feet of fabulous open, yet private, luxury living, this is a favorite with i... [more](#)
Active

KULALANI AT MAUNA LANI #501 - KAMUELA, HI

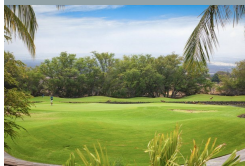


25 Photos Available

\$775,000

MLS: [294212](#) | Condo | **2 Bed, 2.01 Bath** | 1,868 Sq Ft | [3-6-8-22-7-21](#) | Fee Simple
Best Location in Kulalani! Unit 501 is located directly across from the Pool on the Private, Quiet Golf Course. This home features Two Master Suites, has 1868 square feet of fabulous open, yet private, luxury living area and is priced for a quick sale at \$775,000. G... [more](#)
Active

KULALANI AT MAUNA LANI #504 - KAMUELA, HI

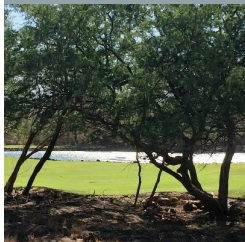


17 Photos Available

\$829,000

MLS: [605800](#) | Condo | **2 Bed, 2.01 Bath** | 1,868 Sq Ft | [3-6-8-22-7-24](#) | Fee Simple
Beautiful dual master townhouse in Kulalani overlooking the 5th green and water feature on the Mauna Lani North course. Incredible views of Mauna Loa and Hualalai. Featuring two master suites located on separate floors with beautifully appointed baths. Enjoy 3 spac... [more](#)
Active

KULALANI AT MAUNA LANI #1104 - KAMUELA, HI

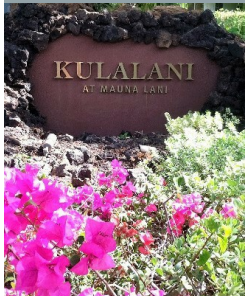


16 Photos Available

\$832,500

MLS: [291831](#) | Condo | **2 Bed, 2.01 Bath** | 1,868 Sq Ft | [3-6-8-22-7-56](#) | Fee Simple
Kulalani at Mauna Lani #1104. Construction is Complete...Immediate occupancy! Much sought after 4-plex building with 2 car garage and views of the 6th fairway of Mauna Lani's North Course. With over 1800 square feet of fabulous open, yet private, luxury living, this... [more](#)
Active

KULALANI AT MAUNA LANI #1201 - KAMUELA, HI

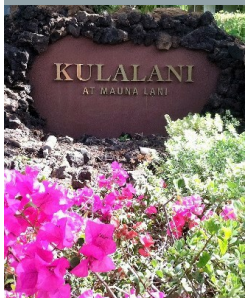


12 Photos Available

\$618,000

MLS: [600970](#) | Condo | **2 Bed, 2.00 Bath** | 1,331 Sq Ft | [3-6-8-22-7-57](#) | Fee Simple
Kulalani at Mauna Lani Unit 1201 is very privately located on the 7th fairway of the Mauna Lani North Course. Kulalani at Mauna Lani Unit 1201 is an Exceptional value in the Mauna Lani Resort. This town home has a large wrap around lanai and 20-foot high vaulted ceil... [more](#)
Active

KULALANI AT MAUNA LANI #1202 - KAMUELA, HI

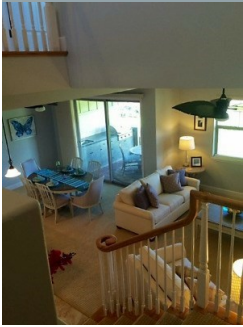


11 Photos Available

\$729,000

MLS: [600975](#) | Condo | **3 Bed, 2.01 Bath** | 1,913 Sq Ft | [3-6-8-22-7-58](#) | Fee Simple
Kulalani at Mauna Lani Unit 1202 is Under Construction. This 3bd/2.5bth unit located on the 7th fairway of the Mauna Lani North Course, has a Large spacious kitchen open to a great room and covered lanai with built-in barbecue for living "island style". Master suite... [more](#)
Active

KULALANI AT MAUNA LANI #1203 - KAMUELA, HI



10 Photos Available

\$623,000

MLS: [600977](#) | Condo | **2 Bed, 2.01 Bath** | 1,631 Sq Ft | [3-6-8-22-7-59](#) | Fee Simple

Kulalani Unit 1203. This 2 Bedrooms 2.5 baths is an Exceptional value in the Mauna Lani Resort. This new home features a 2nd floor master suite with private lanai and views of the 7th fairway of Mauna Lani's North course. Master suite has extra retreat or office spa... [more](#)
Active

KULALANI AT MAUNA LANI #1204 - KAMUELA, HI



10 Photos Available

\$631,100

MLS: [600978](#) | Condo | **2 Bed, 2.01 Bath** | 1,631 Sq Ft | [3-6-8-22-7-60](#) | Fee Simple

Kulalani Unit 1204. This 2 Bedrooms 2.5 baths is an Exceptional value in the Mauna Lani Resort. This new home features a 2nd floor master suite with private lanai and views of the pond on the 7th fairway of Mauna Lani's North course. Master suite has extra retreat o... [more](#)
Active

KULALANI AT MAUNA LANI #1702 - KAMUELA, HI



13 Photos Available

\$970,000

MLS: [603276](#) | Condo | **3 Bed, 2.01 Bath** | 2,022 Sq Ft | [3-6-8-22-7-86](#) | Fee Simple

SPACIOUS, PRIVATE, DESIGNER FURNISHED, LUXURY 3 BED/ 2 ½ BATH VRBO/AIRBNB-ready VACATION RENTAL & INCOME/INVESTMENT CONDO VILLA. Occupied for less than one month since purchase and meticulously maintained, you need only bring groceries and your beach wardrobe t... [more](#)
Active

KULALANI AT MAUNA LANI #1704 - KAMUELA, HI



22 Photos Available

\$812,000

MLS: [604635](#) | Condo | **2 Bed, 2.01 Bath** | 1,868 Sq Ft | [3-6-8-22-7-88](#) | Fee Simple

DREAMS DO COME TRUE! This spacious well designed end-unit townhome offers private luxury living with 10-foot high ceilings on the first level, 9-foot ceilings on the second level, and a dramatic vaulted ceiling in the living room. There's more! There are three separ... [more](#)
Active

KULALANI AT MAUNA LANI #2001 - KAMUELA, HI



23 Photos Available

\$599,000

MLS: [295561](#) | Condo | **2 Bed, 2.00 Bath** | 1,331 Sq Ft | [3-6-8-22-7-99](#) | Fee Simple

Unit 2001 is centrally located within Kulalani very close to the Kulalani recreation center. Nicely furnished and appointed, this popular floor plan includes a large lanai with an outdoor kitchen off the great room, with it's 20 foot high vaulted ceilings. The kitche... [more](#)
Active

KULALANI AT MAUNA LANI #2005 - KAMUELA, HI



20 Photos Available

\$769,000

MLS: [607118](#) | Condo | **3 Bed, 2.01 Bath** | 1,913 Sq Ft | [3-6-8-22-7-103](#) | Fee Simple

Wonderful 3 bedroom/2.5 bath unit, located in the middle of the complex, adjacent to the entrance, of the expansive pool amenity of Kulalani. A well appointed unit with a Hawaiian flair. Owners have just finishing a beautiful kitchen remodel with new cabinetry and gr... [more](#)
Active

KULALANI AT MAUNA LANI #2301 - KAMUELA, HI



10 Photos Available

\$650,000

MLS: [607848](#) | Condo | **2 Bed, 2.00 Bath** | 1,331 Sq Ft | [3-6-8-22-7-115](#) | Fee Simple

Kulalani is a beautiful condominium complex in the Mauna Lani Resort area which boast all the amenities one would expect in a beautiful island atmosphere including championship golf, pristine ocean beaches, traditional walking trails, exquisite dining and an array o... [more](#)
Active

68-1376 PAUOA RD #D-21 - KAMUELA, HI



24 Photos Available

\$475,000

MLS: [299155](#) | Condo | **3 Bed, 2.00 Bath** | 1,197 Sq Ft | [3-6-8-22-18-17](#) | Fee Simple

PRICE REDUCED ~ Motivated seller! This lovely 3/2 upper level unit located in the Palm Villas at Mauna Lani has unique views overlooking one of the islands historic parks and the position of the building allows for a cooling cross breeze. The Palm Villas is well si... [more](#)
Active

RESIDENCES AT LAULEA #5A2 - KAMUELA, HI



13 Photos Available

\$4,400,000

MLS: [605208](#) | Condo | **4 Bed, 4.01 Bath** | 2,654 Sq Ft | [3-6-8-22-24-23](#) | Fee Simple

MAUNA LANI'S NEWEST DEVELOPMENT brings a fresh, contemporary and energy-efficient evolution to luxury resort living on the Kohala Coast! Consisting of just 17 homes – each with its own pool and spa – these homes have been carefully designed and positioned to create l... [more](#)
Active

RESIDENCES AT LAULEA #11B1 - KAMUELA, HI



14 Photos Available

\$3,000,000

MLS: [605347](#) | Condo | **4 Bed, 4.01 Bath** | 2,654 Sq Ft | [3-6-8-22-24-29](#) | Fee Simple

MAUNA LANI'S NEWEST DEVELOPMENT brings a fresh, contemporary and energy-efficient evolution to luxury resort living on the Kohala Coast! Consisting of just 17 homes – each with its own pool and spa – these homes have been carefully designed and positioned to create l... [more](#)
Active

RESIDENCES AT LAULEA #13B1 - KAMUELA, HI



14 Photos Available

\$3,150,000

MLS: [602599](#) | Condo | **4 Bed, 4.01 Bath** | 2,654 Sq Ft | [3-6-8-22-24-31](#) | Fee Simple

MAUNA LANI'S NEWEST DEVELOPMENT brings a fresh, contemporary and energy-efficient evolution to luxury resort living on the Kohala Coast! Consisting of just 17 homes - each with its own pool and spa - these homes have been carefully designed and positioned to create ... [more](#)
Active

MAUNA LANI POINT #D206 - KAMUELA, HI



20 Photos Available

\$1,950,000

MLS: [602440](#) | Condo | **2 Bed, 2.01 Bath** | 1,589 Sq Ft | [3-6-8-22-28-54](#) | Fee Simple

Mauna Lani Point D 206, a penthouse villa, has spectacular ocean, sunset, beach, white water, fairway and mountain views. D 206 has it all. The prime location across from the pool, spa, sauna, pavilion and BBQs of the renovated amenity center and the additional priva... [more](#)
Active

MAUNA LANI POINT #E105 - KAMUELA, HI



16 Photos Available

\$1,730,000

MLS: [601512](#) | Condo | **2 Bed, 2.01 Bath** | 1,589 Sq Ft | [3-6-8-22-28-60](#) | Fee Simple

Seller motivated, very private, great ocean views, reduced. Beautifully appointed and renovated this 2 bedroom Villa has ocean, fairway and sunset views. Rich Koa and mahogany cabinets, granite counters, new appliances, large tile floors through out the great room and... [more](#)
Active

MAUNA LANI POINT #F101 - KAMUELA, HI



23 Photos Available

\$2,500,000

MLS: [252314](#) | Condo | **2 Bed, 2.01 Bath** | 1,589 Sq Ft | [3-6-8-22-28-69](#) | Fee Simple

A Living Masterpiece- Oceanfront completely renovated and fully furnished 2 bedroom 2.5 bath with exceptional location- lower level with no stairs- end unit with large private lawn area for entertaining. Elevated F building provides for unobstructed ocean, fairway,... [more](#)
Active

MAUNA LANI POINT #F102 - KAMUELA, HI



24 Photos Available

\$2,200,000

MLS: [281361](#) | Condo | **2 Bed, 2.01 Bath** | 1,555 Sq Ft | [3-6-8-22-28-70](#) | Fee Simple

~Unobstructed ocean, fairway, Maui and sunset views year round complete the quality Island living this lovely unit offers! ~Fully renovated lower level unit with great attention to detail and delightful custom features. ~Outdoor living space is a plus with access t... [more](#)
Active

MAUNA LANI POINT #H107 - KAMUELA, HI



19 Photos Available

\$699,000

MLS: [281127](#) | Condo | **1 Bed, 1.01 Bath** | 984 Sq Ft | [3-6-8-22-28-95](#) | Fee Simple

Mauna Lani Point H107 is a ground floor one bedroom unit surrounded by Mauna Lani South's 11th, 12th and 13th. It has fantastic golf and mountain views. The Mauna Lani Point is extremely well-built and the unit is very quiet and peaceful. The kitchen has been upda... [more](#)
Active

68-1050 MAUNA LANI POINT DR #H202 - KAMUELA, HI



13 Photos Available

\$1,725,000

MLS: [299411](#) | Condo | **2 Bed, 2.01 Bath** | 1,509 Sq Ft | [3-6-8-22-28-97](#) | Fee Simple

Mauna Lani Point H 202, a two bedroom two and a half bath penthouse, with vaulted ceilings has been competely renovated with new kitchen appliances and cabinets, new bathrooms with huge walk in glass block master shower, tiles, granite counters, lighting and so much ... [more](#)
Active

KA MILO AT MAUNA LANI #10 - KAMUELA, HI



16 Photos Available

\$1,530,000

MLS: **601235** | Condo | **3 Bed, 3.00 Bath** | 2,491 Sq Ft | **3-6-8-22-41-3** | Fee Simple

This luxury resort home enjoys peek-a-boo ocean views, along with golf course and sunset views! With numerous upgrades and fully furnished, this beautiful detached home overlooks the 11th fairway of the Mauna Lani North Course. Beautiful Bamboo floors throughout the ... [more](#)
Active

KA MILO AT MAUNA LANI #17 - KAMUELA, HI



25 Photos Available

\$1,475,000

MLS: **603021** | Condo | **3 Bed, 3.00 Bath** | 2,491 Sq Ft | **3-6-8-22-41-10** | Fee Simple

Overlooking the 11th fairway of Mauna Lani's famed Francis H. I'i Brown North Golf Course, KaMilo #219 was designed and built to reflect the peaceful, unhurried nature embodied in the Hawaiian spirit. High-end finishes abound in this renovated home and fe... [more](#)
Active

KA MILO AT MAUNA LANI #47-1 - KAMUELA, HI



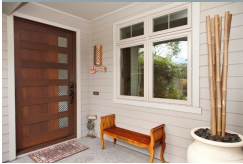
14 Photos Available

\$1,145,000

MLS: **602491** | Condo | **4 Bed, 3.01 Bath** | 2,489 Sq Ft | **3-6-8-22-41-15** | Fee Simple

The Perfect Investment Property! KaMilo 112. This fully furnished turn-key Mahina floor plan includes 4-bedrooms and 3.5 baths, totaling over 3,781 SF of interior and exterior space! This home is fully equipped and ready to go to work for you. The most popular KaMilo... [more](#)
Active

KA MILO AT MAUNA LANI #55-1 - KAMUELA, HI



18 Photos Available

\$925,000

MLS: **604539** | Condo | **4 Bed, 3.01 Bath** | 2,103 Sq Ft | **3-6-8-22-41-31** | Fee Simple

Welcoming, fresh, fabulous, inviting, tasteful....that is what you will find in this beautiful fully furnished 4 bedroom 3 1/2 bath home in the beautiful community of KaMilo at Mauna Lani Resort. This home has two master suites, one upstairs and one downstairs which ... [more](#)
Active

KA MILO AT MAUNA LANI #18 - KAMUELA, HI



23 Photos Available

\$1,850,000

MLS: **605828** | Condo | **3 Bed, 3.00 Bath** | 2,491 Sq Ft | **3-6-8-22-41-100** | Fee Simple

Experience KaMilo at its finest! Enter through the luxurious front entrance to KaMilo 301 and you are immediately taken in by the sense of serenity and lushness of your surroundings, as your gaze is directed towards the 25-foot pocket doors that open up the main la... [more](#)
Active

KA MILO AT MAUNA LANI #407 - KAMUELA, HI



19 Photos Available

\$895,000

MLS: **607459** | Condo | **3 Bed, 2.01 Bath** | 1,653 Sq Ft | **3-6-8-22-41-126** | Fee Simple

KaMilo #407 is a single level paired home that features the "Honua" floor plan and offers abundant space for family and entertaining with friends. The dream kitchen includes a side by side refrigerator, extra quiet dishwasher, electric stove, oven, a granite top kit... [more](#)
Active

KA MILO AT MAUNA LANI #80-2 - KAMUELA, HI



17 Photos Available

\$855,000

MLS: [605999](#) | Condo | **3 Bed, 2.01 Bath** | 1,653 Sq Ft | [3-6-8-22-41-154](#) | Fee Simple

This BRAND NEW, FULLY COMPLETED, KaMilo home #432 (Honua A floor plan) includes 3-bedrooms, 2.5 baths. This single level paired home offers abundant space for family and entertaining with friends. Beautiful upgrades have been selected throughout the home as include... [more](#)
Active

KA MILO AT MAUNA LANI #513 - KAMUELA, HI



14 Photos Available

\$1,250,000

MLS: [608068](#) | Condo | **4 Bed, 3.01 Bath** | 2,489 Sq Ft | [3-6-8-22-41-9621](#) | Fee Simple

BRAND NEW 4 BEDROOM HOME UNDER CONSTRUCTION LOCATED NEXT TO TROPICAL GARDEN KaMilo home #513. This highly upgraded, brand new popular Mahina (2 story paired home) floor plan includes 4-bedrooms and 3.5 baths. With over 3,700 SF of interior and exterior space. The ... [more](#)
Active

GOLF VILLAS AT MAUNA LANI RESORT #B2 - KAMUELA, HI



20 Photos Available

\$749,000

MLS: [600347](#) | Condo | **3 Bed, 3.00 Bath** | 1,819 Sq Ft | [3-6-8-22-52-8](#) | Fee Simple

Situated on the 3rd green of the championship Francis H. I'i Brown South Golf Course, Villa B2 is a two-level town home with ground-level entry. Villa B2 features three bedrooms, three baths and a large upstairs loft. East facing, Villa B2 overlooks the golf course,... [more](#)
Active

GOLF VILLAS AT MAUNA LANI RESORT #E1 - KAMUELA, HI



22 Photos Available

\$775,000

MLS: [600654](#) | Condo | **3 Bed, 3.00 Bath** | 1,830 Sq Ft | [3-6-8-22-52-22](#) | Fee Simple

Fabulous 2-story Unit in Private Gated Community, overlooking World Famous Francis H. I'i Brown South Golf Course. Panoramic Views of Mauna Kea from both Upstairs & Downstairs Lanais. BBQ Grill compliment your Outdoor Dining Experience. Inside, you'll find Space Galo... [more](#)
Active

GOLF VILLAS AT MAUNA LANI RESORT #E2 - KAMUELA, HI



24 Photos Available

\$498,000

MLS: [600547](#) | Condo | **2 Bed, 2.00 Bath** | 1,103 Sq Ft | [3-6-8-22-52-23](#) | Fee Simple

A great opportunity to buy this beautiful & successful vacation rental; 2 bed 2 bath ground floor unit on the 10th fairway of Mauna Lani's South course. The lanai has a full summer kitchen including wet-bar & Thermador gas grill and overlooks the golf course faces ... [more](#)
Active

GOLF VILLAS AT MAUNA LANI RESORT #F3 - KAMUELA, HI



23 Photos Available

\$720,000

MLS: [608625](#) | Condo | **3 Bed, 3.00 Bath** | 1,819 Sq Ft | [3-6-8-22-52-30](#) | Fee Simple

Relax in a beautiful 3 bedroom/ 3 bath 1,819 sq. ft. luxury villa on the 10th fairway of the South Course of the world famous Francis I'i Brown course. Enjoy BBQ'ing at sunset in your own outdoor kitchen with a Thermador Gas Grill. 9 foot ceilings with spacious win... [more](#)
Active

GOLF VILLAS AT MAUNA LANI RESORT #I3 - KAMUELA, HI



22 Photos Available

\$768,000

MLS: [603782](#) | Condo | **3 Bed, 3.00 Bath** | 1,819 Sq Ft | [3-6-8-22-52-46](#) | Fee Simple

Enjoy resort living at its finest at the Mauna Lani. Golf Villas I-3 located on the 9th green of the South Course of the world famous Francis I'i Brown golf course. Sunset views compliment this elegant three bedroom golf resort property. Enjoy the outdoor kitchen ye... [more](#)
Active

GOLF VILLAS AT MAUNA LANI RESORT #J3 - KAMUELA, HI



24 Photos Available

\$529,000

MLS: [296241](#) | Condo | **2 Bed, 2.00 Bath** | 1,103 Sq Ft | [3-6-8-22-52-51](#) | Fee Simple

Lowest priced condo in the Mauna Lani resort! This well maintained and tastefully decorated condo has been a successful vacation rental and is being sold fully furnished. Golf Villa J3 faces southwest for beautiful sunsets and shelter from the trade winds. Building J... [more](#)
Active

GOLF VILLAS AT MAUNA LANI RESORT #K3 - KAMUELA, HI



24 Photos Available

\$759,000

MLS: [607882](#) | Condo | **3 Bed, 3.00 Bath** | 1,819 Sq Ft | [3-6-8-22-52-57](#) | Fee Simple

Golf Villas K3 at Mauna Lani is a beautiful townhome that includes 3 spacious bedrooms and 3 baths all within an appealing open floor plan. This unit is being offered fully furnished along with the luxury features of granite counter tops, tiled floors, breakfast bar,... [more](#)
Active

GOLF VILLAS AT MAUNA LANI RESORT #K4 - KAMUELA, HI



20 Photos Available

\$749,000

MLS: [606845](#) | Condo | **3 Bed, 3.00 Bath** | 1,819 Sq Ft | [3-6-8-22-52-58](#) | Fee Simple

The K Building is extremely private that is located at the end of the complex. Pride of ownership. It's in like-new condition. Mauna Kea, Mauna Loa and Hualalai Mountain Views from your built in BBQ and both lanais. Seller had first selection from the developer and ... [more](#)
Active

GOLF VILLAS AT MAUNA LANI RESORT #M1 - KAMUELA, HI



24 Photos Available

\$755,000

MLS: [603537](#) | Condo | **3 Bed, 3.00 Bath** | 1,830 Sq Ft | [3-6-8-22-52-65](#) | Fee Simple

\$14,000 Price Reduction on this VIEW unit at the low density, gated, Golf Villas at Mauna Lani. This beautiful 3 bedroom/ 3 bath Hawaiian Luxury Villa is the desirable 2 story end unit that overlooks the 4th Fairway of the Mauna Lani Francis I'i Brown South Course. ... [more](#)
Active

GOLF VILLAS AT MAUNA LANI RESORT ... - KAMUELA, HI



6 Photos Available

\$615,000

MLS: [608664](#) | Condo | **2 Bed, 2.00 Bath** | 1,460 Sq Ft | [3-6-8-22-52-70](#) | Fee Simple

Panoramic Mauna Kea, Hualalai and fairway views from this pristine two bedroom with spacious loft. An upgrade includes tile floors throughout the great room, freshly paint and new carpeting. Granite counters, mahogany cabinets, BBQ on lanai, one- car garage. Never r... [more](#)
Active

68-1004 PAPA KONA NE CT - KAMUELA, HI



25 Photos Available

\$2,950,000

MLS: [602782](#) | Residential | **4 Bed, 3.01 Bath** | 3,806 Sq Ft | 18,124 sqft | [3-6-8-24-9](#) | Fee Simple

Discover a unique & magical home—not the typical resort design we see so often. Step through the stained glass portal & find your private Hawaiian oasis designed by legendary architect Lucky Bennett. Be enchanted by the lava rock waterfall; step over wrap-arou... [more](#)
Active

68-1002 KONANE CT - KAMUELA, HI



9 Photos Available

\$1,695,000

MLS: [604847](#) | Land | 21,694 sqft | [3-6-8-24-18](#) | Fee Simple

The golf course frontage lot provides unobstructed ocean views from both stories of your dream house. Yes! You can build a two story on this lot and the Seller even has plans approved by Mauna Lani that will capture ocean views to the north from the second story. ... [more](#)
Active

68-3558-A AKA PL - WAIKOLOA, HI



24 Photos Available

\$570,000

MLS: [604337](#) | Residential | **4 Bed, 2.01 Bath** | 1,524 Sq Ft | 13,807 sqft | [3-6-8-26-35](#) | Fee Simple

Privacy abounds- ADD Solar photo voltaic electric power + solar hot water owned by seller. Situated at end of cul de sac, this flag lot offers privacy and north western views of ocean, Maui Isle, Kawaihae Harbor, sunsets and the Kohala Mountains. The BONUS is the cov... [more](#)
Active

68-3576 MALINA ST - WAIKOLOA, HI



6 Photos Available

\$549,500

MLS: [608611](#) | Residential | **3 Bed, 2.00 Bath** | 1,505 Sq Ft | 11,550 sqft | [3-6-8-26-118](#) | Fee Simple

This immaculate Waikoloa home features a desirable open floor plan, with the master suite on the opposite side of the house for extra privacy. The house is extra clean and would be ideal for a family or couple! Nice lanai in the back with a partial view of the ocean a... [more](#)
Active

68-3554 MALINA ST - WAIKOLOA, HI



5 Photos Available

\$179,000

MLS: [604665](#) | Land | 14,269 sqft | [3-6-8-26-125](#) | Fee Simple

Great lot with ocean and Hualalai views. Any home built on this lot will protect the lanai from the trades due to how the lot faces off the street. - Oversized Lot - Lanai will be sheltered from the trades - 2-Story will be OK to build - Graded house pad - Corner pin... [more](#)
Active

68-3530 MAKANA ALOHA PL - WAIKOLOA, HI



7 Photos Available

\$189,500

MLS: [299053](#) | Land | 10,012 sqft | [3-6-8-26-146](#) | Fee Simple

Here's your chance to own a nice homesite in a great area of Waikoloa Village. Elevated, already graded flat lot features amazing views of the ocean and Hualalai, and on clear days, of Mauna Loa, Maui and a corridor view of the lights of Kawaihae shoreline! Backs to ... [more](#)
Active

CHAMPION RIDGE AT MAUNA LANI LOT #:3 - KAMUELA, HI



8 Photos Available

\$895,000

MLS: [284916](#) | Land | 23,257 sqft | [3-6-8-27-3](#) | Fee Simple

Great two-story over half and acre home-site with ocean, fairway and mountain views, overlooking the Mauna Lani driving range. The adjacent ocean side home is one story with large lawn area, allowing panoramic ocean views from the second floor of this lot. Champion... [more](#)
Active

68-105 PUKAUA PL - KAMUELA, HI



17 Photos Available

\$2,149,000

MLS: [601142](#) | Residential | **3 Bed, 3.01 Bath** | 3,492 Sq Ft | 24,391 sqft | [3-6-8-27-19](#) | Fee Simple

Classic island single family home designed by architect Harrell McCarty, fully embraces island living at its finest. Central great room graced with 9'+ African Mahogany ceiling, ideal for entertaining guests, opens to covered lanai with views of majestic Kohala Mount... [more](#)
Active

68-1763 NAWILI PL - WAIKOLOA, HI



18 Photos Available

\$469,000

MLS: [605587](#) | Residential | **3 Bed, 2.00 Bath** | 1,083 Sq Ft | 13,916 sqft | [3-6-8-29-49](#) | Fee Simple

Expansive lot in Waikoloa. This family home is ready for a family that wants to spend their time outdoors in their big back yard. Fully fenced in with huge area in the front and the back for entertaining friends. The home is built to let sunlight in to light up th... [more](#)
Active

68-3596 MAKUAHINE ST - WAIKOLOA, HI



21 Photos Available

\$470,000

MLS: [608158](#) | Residential | **3 Bed, 2.00 Bath** | 1,124 Sq Ft | 7,958 sqft | [3-6-8-30-26](#) | Fee Simple

This single story 3 bedroom/2 bathroom home has views of ocean & sunsets from living room, bedrooms and lanai! Paniolo Estate is a great location and starting home for first time home buyers, investors and/or retirement home! Home features easy flow throughout wit... [more](#)
Active

68-1713 PUWALU PL - WAIKOLOA, HI



25 Photos Available

\$699,500

MLS: [604519](#) | Residential | **3 Bed, 2.00 Bath** | 1,512 Sq Ft | 13,732 sqft | [3-6-8-31-23](#) | Fee Simple

Introducing 68-1713 PUWALU PLACE after a recent extensive refurbishment in all its magnificent GLORY! Enjoy OCEAN, SUNSET, HUALALAI MOUNTAIN AND UNDEVELOPED OPEN SPACE VIEWS tucked away on a cul-de-sac lot of 13, 372 square feet! This stunning single level home has... [more](#)
Active

68-1683 AKAULA ST - WAIKOLOA, HI



5 Photos Available

\$145,000

MLS: [296057](#) | Land | 11,087 sqft | [3-6-8-32-14](#) | Fee Simple

Very private flag lot at the end of the cul-de-sac. Lot has been graded and is ready for a new home. Good neighborhood. Ideal for spec home or buy now and build later. Seller is motivated. [more](#)
Active

68-1063 HONOKAOPE PL - KAMUELA, HI



24 Photos Available

\$2,250,000

MLS: [601101](#) | Residential | **4 Bed, 3.01 Bath** | 3,002 Sq Ft | 36,634 sqft | [3-6-8-33-36](#) | Fee Simple

An elegant fully landscaped house with a detached guest suite, private pool with connected spa in Pacific Blue, mahogany cabinetry, custom pocket doors, outdoor showers, solid slab granite countertops in kitchen and bathrooms, covered lanais in quartzite flooring, se... [more](#)
Active

68-1065 HONOKAOPE PL - KAMUELA, HI



1 Photos Available

\$750,000

MLS: [601207](#) | Land | 1.04 ac | [3-6-8-33-37](#) | Fee Simple

An incredible opportunity to own real estate in a private neighborhood known to be one of the most exclusive on the Big Island. Homesite allows for a two-story home. Owners in this gated community have access to a private beach club adjacent to an exotic 800-year old... [more](#)
Active

68-1071 HONOKAOPE PL - KAMUELA, HI



1 Photos Available

\$750,000

MLS: [601208](#) | Land | 34,020 sqft | [3-6-8-33-39](#) | Fee Simple

An incredible opportunity to own real estate in a private neighborhood known to be one of the most exclusive on the Big Island. Homesite allows for a two-story home. Owners in this gated community have access to a private beach club adjacent to an exotic 800-year old... [more](#)
Active

68-1073 HONOKAOPE PL - KAMUELA, HI



1 Photos Available

\$750,000

MLS: [601209](#) | Land | 35,153 sqft | [3-6-8-33-40](#) | Fee Simple

An incredible opportunity to own real estate in a private neighborhood known to be one of the most exclusive on the Big Island. Homesite allows for a two-story home. Owners in this gated community have access to a private beach club adjacent to an exotic 800-year old... [more](#)
Active

68-1079 HONOKAOPE PL - KAMUELA, HI



5 Photos Available

\$1,000,000

MLS: [601100](#) | Land | 28,750 sqft | [3-6-8-33-42](#) | Fee Simple

49 Black Sand Beach Lot #42 -fabulous home-site in oceanfront private gated community- fairway frontage- ocean views from second story with the right design- close to the Beach Club with its pool, spa, fitness room, pavilion, kitchen, BBQ, wine storage, kayak storage... [more](#)
Active

68-1083 HONOKAOPE PL - KAMUELA, HI



6 Photos Available

\$1,050,000

MLS: [601106](#) | Land | 28,445 sqft | [3-6-8-33-43](#) | Fee Simple

49 Black Sand Beach Lot #43 -fabulous home-site in oceanfront private gated community- fairway frontage- ocean views from second story with the right design- close to the Beach Club with its pool, spa, fitness room, pavilion, kitchen, BBQ, wine storage, kayak storage... [more](#)
Active

68-1087 HONOKAOPE PL - KAMUELA, HI



18 Photos Available

\$2,795,000

MLS: [608561](#) | Residential | **4 Bed, 4.01 Bath** | 3,793 Sq Ft | 31,276 sqft | [3-6-8-33-44](#) | Fee Simple

This exceptional 2 story residence at Lot #44 Black Sand Beach, was designed by famed Hawaii architect Charles " Lucky " Bennett and built by Chris Clever for the owners as a vacation home for extended, gracious and comfortable "home away from home" living. Each of t... [more](#)
Active

68-1005 PAUOA WY - KAMUELA, HI



19 Photos Available

\$6,500,000

MLS: [606510](#) | Land | 1.64 ac | [3-6-8-34-9](#) | Fee Simple

The one last opportunity to develop a custom OCEANFRONT ESTATE AT MAUNA LANI RESORT. Spectacular oceanfront 1.64 acre home-site at Pauoa Beach, nestled between the Mauna Lani Bay and the Fairmont Orchid Hotels. Located at the end of a very private cul de sac, Lot #9 ... [more](#)
Active

This information has been supplied by third parties and has not been independently verified by Hawaii Information Service and is, therefore, not guaranteed.